



- CATALOGUE +

SOLUTIONS BY **ACCUEVERGY**

CONTENTS

Chapter 1: About Accuenergy	2
Chapter 2: Accuenergy Meters	4
2.1 Acuvim II - Power & Energy Meter	4
2.4 Acuvim II + AXM-WEB2	7
2.2 Acuvim-L - Panel / Device Meter	8
2.5 AcuRev 1310 - DIN-Rail Power & Energy Meter	10
2.6 EV300 - Multi-Function Power Meter	12
2.7 AcuRev 2000 - Multi-Circuit Submeter	14
2.7 AcuDC 240 - DC Power & Energy Meter	16
Chapter 3: Panel Metering Solutions	18
3.1 AcuPanel 9100 - Pre-Configured Panel Meter	18
Chapter 4: Communications & Software Solutions	20
4.1 AcuLink 810 - Data Acquisition Gateway	20
4.2 AcuMesh - Wireless RS485 Metering Network	23
4.3 AcuCloud - Cloud-Based Metering Platform	25
Chapter 5: Current Transformers	29
5.1 AcuCT Flex - Flexible Rope Style CTs	29
5.2 RIK - Rogowski Integrator Kit	31
5.2 AcuCT R - Press to Open Split Core CTs	32
5.3 AcuCT mV - Revenue Grade 333mV CTs	33
5.4 AcuCT 5A - Revenue Grade 5A CTs	34
5.5 AcuCT Hinged - Compact 333mV Hinged CTs	35
5.6 AcuCT S113 - Solid Core Current Transformer	36
5.7 AcuCT S77 - Measurement Canada Approved Solid Core CTs	36



We Are Accuenergy

Accuenergy (Canada) Inc. specializes in power metering solutions that leads the industry in revenue grade energy metering, power quality analysis, ease of deployment and advanced communication methods. Our reliable power meters have been used globally to monitor electrical systems in commercial buildings, industrial facilities, data centres and cell towers for more than 20 years.

Our goal is to provide users with well-designed products that are easy to implement without sacrificing key functionality. Our pre-wired

panel meters and wireless submeters are designed to offer the simplest tenant billing and metering solutions on the market, while providing ease of installation.





MASTER OF INTEGRATION

Highly configurable and designed for easy-integration in almost any metering application. The Acuvim II series offers a wide array of plug-in expansion modules for up to 15 different communication protocols.

ACCUENERGY.COM/ACUVIM-II

KEY FEATURES

- Four different models for Revenue Grade Metering, Data Logging, Time-of-Use and Power Quality.
- Revenue grade ANSI C12.20 class 0.2 & IEC 62053-22 class 0.2s.
- Built-in MODBUS RTU via RS485 port.
- Level 2 DNP3 and IEC61850 2nd Edition.
- MV90 Support.
- 8GB Datalogging and event storage.
- COMtrade Waveform format.
- Plugin modules for Ethernet, WiFi, BACnet, Profibus.
- Choose panel mounted meter with display or DIN rail mounted transducer with optional remote display.
- Multifunctional meter in NEMA3/NEMA4X housing with three line backlit graphical LCD display.
- Optional DIN rail mounted transducer form factor for system integration.





DATA LOGGING

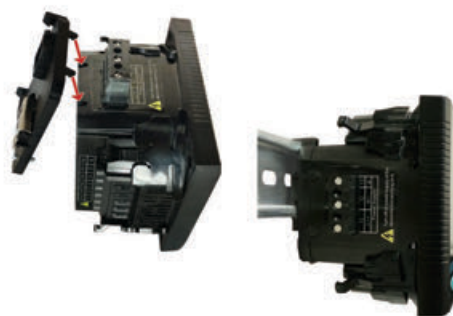
Acuvim IIR, IIE and IIW adds a data logging feature that shows historical and real-time data used for trend analysis, reports and tenant billing. Set threshold alarms and remote monitoring. With AXM-WEB2, memory size expands to industry-leading 8GB at 1-second interval polling.

TIME-OF-USE

Acuvim IIE allows scheduling for time-of-use (TOU) for industrial/commercial customers that require complex time-based or tier-based rate structures.

POWER QUALITY MONITORING

The Acuvim IIW adds detection for energy deviations using harmonic analysis, event logging and waveform capture for abnormalities such as voltage sags & swells.



AXM-DIN RAIL MOUNTING ADAPTER

AXM-DIN Rail adapter provides an easy solution for environments that prefer a DIN rail mounted installation for all Acuvim II series meter models and IO options.

ACUVIM II SERIES MODELS

	Acuvm II	Acuvm IIR	Acuvm IIE	Acuvm IIW
Application	General Use	Billing / Data Logging	Time-of-Use	Power Quality
Metering	400 Parameters	400 Parameters	400 Parameters	400 Parameters
Data Logging		●	●	●
Memory		8MB	8MB	16MB
With AXM-WEB-PUSH	4GB	4GB	4GB	4GB
With AXM-WEB2	8GB	8GB	8GB	8GB
Time-of-Use			●	
Power Quality				●



ACUPANEL
COMPATIBLE
METER





ACUVIM II

AXM COMMUNICATION MODULES

COMMUNICATION

AXM Modules are designed for use with Acuvim II meters, expanding the communications capabilities of the core meter itself. These field-expandable modules are easy to deploy and plug directly into the meter allowing for quick installations.

ACCUENERGY.COM/AXM-MODULES

I/O MODULES INCLUDE

AXM-IO1
6 digital inputs, 24Vdc power for inputs, 2 relay outputs

AXM-IO2
4 digital inputs, 2 digital outputs, 2 analog outputs

AXM-IO3
4 digital inputs, 2 relay outputs, 2 analog inputs

Expansion Protocol Support

Modbus-TCP/IP, SNMP, SMTP, SMTP, HTTP(s) Post, HTTP(s) webserver, BACnet-MS/TP, BACnet-IP, Profibus, IEC61850, Second Modbus-RTU

Expansion Interface Support

Ethernet, Wireless Mesh Network, WiFi, Cellular, Profibus

ACUVIM II COMMUNICATION MODULES

	Standard	New: AXM-WEB2	AXM-WEB PUSH	AXM-BMS	AXM-BIP	AXM-PROFI	AXM-RS485	AXM-MESH
MODBUS-RTU	•						•	
DNP 3.0 Over IP		•	•					
IEC 61850		•						
MODBUS-TCP		•	•					
HTTP/HTTPs Webserver		•	•		•			
SMTP Email		•	•					
SNMP V3		•	•					
HTTP/HTTPs Push		•	•					
FTP Post		•	•					
sFTP Server		•	•					
Datalogging		8GB	4GB					
BACnet-MS/TP				•				
BACnet-IP		•			•			
PROFIBUS						•		
WiFi		•						
Dual RJ45 Ports		•						
RF								•

ACUVIM II+AXM-WEB2

ACUVIM II METER WIFI + ETHERNET MODULE

KEY FEATURES & BENEFITS

- IEC 61850 protocol
- Remote device access
- Daisy-chain ethernet ports (RSTP Protocol) on WEB2
- IPv6 128-bit addressing allows for more connected devices
- WiFi WPA, WPA2 Enterprise
- Custom Modbus registers in Acuvim II (optional AXM-WEB2 configuration)
- Maintain high availability by RSTP protocol (two ports connected to same subnet)
- Data-logging with real-time measurement, maximum, minimum and average for each logging interval
- Dual ethernet RJ45 port with individual network configuration
- Dual Ethernet ports and WiFi works simultaneously with different networks and data acquisition systems
- COMtrade format for waveform capture
- 8GB onboard memory with 1-second interval datalogging capabilities



Datalogging and Event Storage



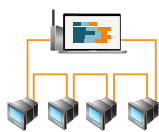
WPA2 Enterprise security protocol



Access anywhere via SerialNumber.accuenergy.io



COMtrade Waveform Format



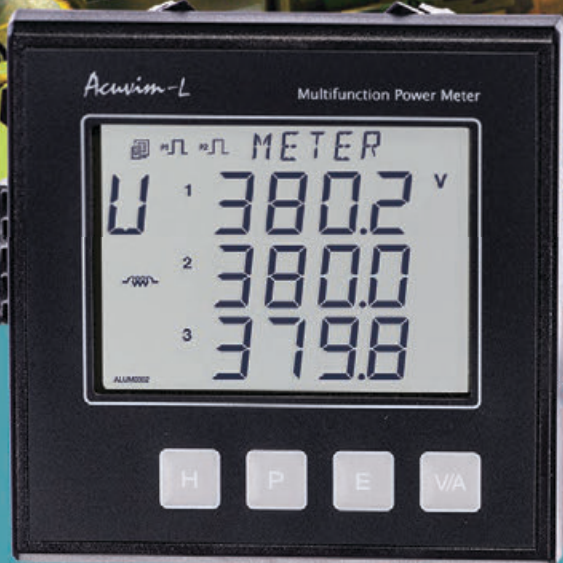
Daisy-chain support via ethernet ports,



ACCUEnergy.COM/AXM-WEB2



- Industry leading 100ms and 40ms response rate via ModbusTCP/IP protocol
- Secure HTTPs data encryption to cloud server
- SSL encrypted webserver plus TLS 1.2 compliance for industry leading cybersecurity standard
- Metering data backup log to avoid data loss during network downtime
- Support industrial, utility and substation protocols IEC 61850, DNP 3.0 V2, Modbus-TCP/IP, SNMP, HTTP/HTTPs Post, FTP & SNTp
- Built-in sFTP server for data-log storage and retrieval
- Graphical display of historical data trends on all parameters for analysis
- WiFi supports Access Point mode and Station mode for both direct connection/configuration and public WiFi network
- Firmware Over-the-air (OTA) update



ECONOMICAL SUB METERING

This economical series of meters offers quality and performance typically found in meters many times it's price. The Acuvim-L series are versatile electrical meters used for panel/device monitoring with three phase AC systems.

ACCUENERGY.COM/ACUVIM-L

KEY FEATURES

- Six different models for different applications including Time-of-Use, kWh metering, and MODBUS integration.
- NEMA 4 rated tough design.
- 3-Line LCD display with backlight.
- Multiple current transformer options.
- Industry leading 5 year warranty.
- Built-in MODBUS RTU (some models).
- Optional DIN rail mount transducer (some models).
- Built-in power supply for easier, faster installation.
- Revenue grade ANSI C12.20 class 0.5 & IEC 62053-22 class 0.5s.



MODBUS INTEGRATION

Acuvim-L meter series come with a built-in Modbus RTU protocol via the RS485 port allowing meter data interoperability with any computer or master device that has a serial communication in place.

TIME-OF-USE

Acuvim-EL features Time-of-Use functionality allowing users to segregate energy consumption to parallel utility tariffs for up to four different tariffs schedules, 12 seasons and 14 schedules. Ideal for sub metering in regions with a sliding rate scale or are tariff-based.

KWH METERING

All Accuenergy Acuvim-L meter models come with real-time bi-directional energy data monitoring for easy, cost-effective kWh sub metering for either single or three-phase circuits.



ACUVIM-L SERIES MODELS

	AL	BL	CL	DL	EL	KL
Application	Analog Meter Replacement	Pulse Output Meter	MODBUS Integration	Multiple System Integration	Time-of-Use & Tariff Metering	Low Cost kWh Submetering
Metering	Voltage, Current, Power				Current, Power	
Energy & Demand	•	•	•	•	•	•
Time-of-Use					•	
Built-in Communication	-	2 Digital I/O		MODBUS RTU		
Expansion Modules	-	-	-	Digital Input, Digital Output, Profibus		-
DIN Rail Mount Option			•	•	•	•



COMMUNICATIONS MODULES

These plug-in expansion modules are available for the Acuvim L line of economical power and energy meters.

ACUVIM-L LX MODULES

	Digital Input (DI)	Digital Output (DO)	RS485 Port	Profibus Port
LX-1	4	2	-	-
LX-2	4	2	1	-
LX-3	-	-	-	1
LX-4	4	2	-	1



ACUMESH
COMPATIBLE PRODUCT



**ACUPANEL
COMPATIBLE
METER**



DIN-RAIL MULTIFUNCTIONAL POWER METER

The AcuRev 1310 combines high performance with easy integration to provide a cost-effective power and energy monitoring solution. Featuring a built-in LCD, MODBUS-RTU communication, and 4 channel current input.

ACCUENERGY.COM/ACUREV-1310



ACUREV 1310

KEY FEATURES

Utility Revenue Grade Accuracy - IEC 62053-22 0.5s Class / ANSI C12.20 0.5 Class.

Measurement Canada Approved Revenue Meter.

Multiple CT Input Options compatible with any CT: 5A/1A, 333mV, Flexible Rogowski Coil, 80/100/200mA.

4 Channel current input including neutral current measurement.

Residual current measurement available.

10-690Vac direct voltage input, fits all voltage rating system with one model.

RS-485 port built-in with Modbus-RTU and BACnet-MSTP for integration with most systems

Standard Din-rail mount for ease-of-installation.

Compatible with both 50Hz and 60Hz systems.

Built-in energy pulse output and alarm output.

Optional relay output for alarm and remote control.



ACUMESH
COMPATIBLE PRODUCT



4 CHANNEL CT INPUT

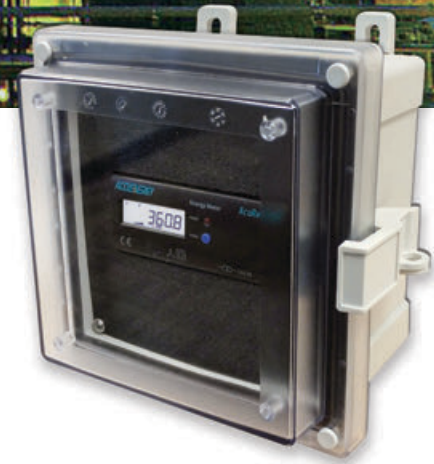
Accurately measure neutral current with 4th CT channel to provide residual current measurement.

AUTO PHASE-CHECK

Designed to automatically check most common wiring mistakes such as CT direction, voltage and current phase alignment.

SUPPORTS ALL ELECTRICAL SYSTEMS

Three phase three wire (3P3W), three phase four wire (3P4W), single phase three wire (1P3W two element), single phase two wire (1P2W one element) and more.



NEMA4X RATED WALL MOUNT ENCLOSURE FOR ACUREV 1310 SERIES

The AcuRev1310 enclosure (AcuRev 1310-ENC) offers a mounting option for AcuRev1310 Series energy meters that helps protect from tampering and the elements.

ACUREV 1310 SERIES MODELS

	1311	1312	1313	1314
Application	DIN-Rail mounted real-time energy monitoring	DIN-Rail mounted real-time power and energy monitoring	DIN-Rail mounted real-time bi-directional power and energy monitoring	DIN-Rail mounted real-time multifunction monitoring with neutral current measurement and calculated residual current
Metering	Energy, Voltage, Current, Active Power	Energy, Time-of-Use, Power Demand, Current Demand, Voltage, Current, Power, Power Factor, Frequency	Energy, Time-of-Use, Power Demand, Current Demand, Voltage, Current, Power, Power Factor, Frequency	Energy, Time-of-Use, Power Demand, Current Demand, Voltage, Current, Power, Power Factor, Frequency
Current Input	5A/1A: Field-Configurable 5A or 1A Current Transformer Input 333mV: 333mV Current Transformer Input RCT: Flexible Rogowski Coil Current Transformer Input 80/100/200mA: Field Configurable 80mA, 100mA or 200mA Current Transformer Input			
I/O Options	One relay output for alarm and remote control			



THREE-PHASE POWER METER

Three-Phase power and energy meter offers a low-cost solution for reliable power metering. The EV300 series offers bi-directional energy metering with utility revenue grade accuracy in a compact panel-mountable meter.

[ACCUENERGY.COM/EV300](http://accuenergy.com/ev300)



KEY FEATURES

- Bi-directional Energy Metering.
- Utility Revenue Grade Accuracy.
- Field Configurable 5A/1A CT Input.
- Compatible with both 50Hz and 60Hz system.
- RS485 port Built-in with Modbus-RTU.
- Standard Panel Mount 96mm DIN- Direct Retrofit.
- Switch Status Monitoring and Controlling.
- Energy Pulse Output.
- 4-20mA Analog Transducer Output.
- Over/Under Limit Alarm-triggered Relay Output.
- Lowest Cost in the Same Class Guaranteed.





VOLTAGE

Measuring from 10V to 230/400V that works directly with any voltage rating system. Potential Transformer ratio configuration supported.

CURRENT

5A and 1A CT input field-configurable that suits any industrial current transformer.

FREQUENCY

Automatically detects for a 50Hz and 60Hz system without compromising the accuracy, which simplifies the design & eliminates international OEM frequency issues.

EV300 SERIES MODELS

	EV387	EV390
Application	Panel-Mounted Economical kWh Metering	Economical Three-Phase Panel Monitoring
Metering	Voltage, Current, Energy, Reactive Energy	Voltage, Current, Power, Reactive Power, Apparent Power, Power Factor, Frequency, Energy, Reactive Energy
LCD Display	•	•
Digital Input		2 Digital Inputs
Additional I/O Functions Available	•	•



**ACUPANEL
COMPATIBLE**
METER



~ ACUREV 2000 ~

MULTI-CIRCUIT POWER & ENERGY METER

AcuRev 2000 is a series of multi-circuit power and energy meters that offers revenue-grade accuracy for multi-tenant billing and high-density multi-point metering. Includes built-in data logging capabilities, multi-tariff time-of-use (TOU) functionality, power quality metering, and capacity for up to 18 single-phase circuits or 6 three-phase circuits.

ACCUENERGY.COM/ACUREV-2000

KEY FEATURES

18 channels for 18 single phase or 6 three phase circuits.

Revenue grade standard ANSI C12.20 class 0.5 and IEC 62053-22 class 0.5s.

External CTs for retrofit applications.

Optional direct current input to 80A for new installation.

Built-in MODBUS RTU via RS485 for integration.

Optional Ethernet and WiFi communication with built-in HTTPs Webserver.

Built-in data logging for historical recording.

Over/under limit alarms for demand control.

4 Programmable tariff periods with 12 independent seasons, 14 schedules, and 10 year holiday configuration.





DATA LOGGING

All monitored parameters such as individual branch circuit consumption and demand, along with I/O integrated units can be recorded for historical data logging and analysis on the meters non-volatile memory.

TIME-OF-USE

AcuRev 2000 features Time-of-Use functionality allowing users to segregate energy consumption to parallel utility tariffs for up to four different tariffs schedules, 12 seasons and 14 schedules. Ideal for sub metering in regions with a sliding rate scale or are tariff-based.

POWER QUALITY

AcuRev 2020 meters provide power quality parameters such as voltage and current THD, individual voltage and current harmonics up to 31st order, voltage crest factor, current K factor, voltage and current unbalance. All monitored in real time per branch circuit and available for data logging.

ACUREV 2000 SERIES MODELS

	1EM	2EM	1DM	2DM
Application	Retrofit Multi-Tenant Submetering	Branch Circuit Monitoring	New distribution panel with up to 80A circuits per phase	New distribution panel with up to 80A circuits per phase
Number of Single Phase 1 Hot Circuits Monitored	9	18	9	18
Number of Three Phase Circuits Monitored	3	6	3	6
Additional CTs Required	Yes	Yes	No	No
CT Input	Via 333mV CTs or Rogowski Coil CT	Via 333mV CTs or Rogowski Coil CT	Direct Current Input	Direct Current Input



ACUMESH
COMPATIBLE PRODUCT



- ACUCLOUD +
COMPATIBLE PRODUCT





DC POWER & ENERGY METER

The AcuDC 240 series of DC power and energy meters are designed for monitoring DC consumption and generation in applications like renewable energy. The AcuDC 240 is a capable metering device able to read voltage, current, power, energy and ampere-hour.

[ACCUENERGY.COM/ACUDC-240](http://accuenergy.com/acudc-240)



- ACUDC 240 +

KEY FEATURES

- Built-in three-line LCD display.
- Optional MODBUS RTU communications.
- Monitor and control power switches.
- Standard 72x72mm size allows for drawer type panel installation.
- Accessible with SCADA, PLC systems.
- Onboard datalogging provides historical logging of all DC metering parameters for analysis.
- Built-in hall effect sensor power supply (+/-15Vdc) for ease of measuring with hall effect sensor.
- Optional digital input and output, analog and relay output I/O expansions.

SOLAR ARRAYS

Directly monitor the power and energy produced from the solar array (before the inverter) for the most accurate analysis of solar production.

WIND TURBINES

Meter the production and effectiveness of wind generated energy before being sent into the grid, and integrate with existing systems through Modbus RTU.

VEHICLE CHARGING

Audit and observe the electrical consumption of recharging stations or individual EV motors from a charge station in real time, as an accumulated total, and with historical data logging.

ACUDC 240 SERIES MODELS

	AcuDC 241	AcuDC 242	AcuDC 243
Application	Meter integration and monitoring of DC voltage	Meter Integration and monitoring of DC current	All DC monitoring and metering applications
Metering	Voltage	Current	Voltage, Current, Power, Energy, Ampere-Hour
I/O Modules Available	•	•	•
Data Logging			Optional
Communications		Optional built-in MODBUS RTU	



COMMUNICATIONS MODULES

These plug-in expansion modules are available for the AcuDC line of DC power and energy meters.

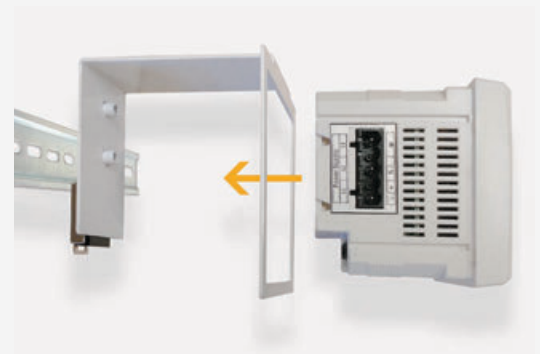
ACUDC 240X MODULES

	Digital Input (DI)	Analog Output (AO)	Analog Input (AI)	Relay Output (RO)	Digital Output (DO)	Hall Effect Sensor Power Supply
X-1	2	2	-	-	-	-
X-2	2	2	-	-	-	-
X-3	2	-	2	2	-	-
X-4	2	-	-	-	2	-
X-5	2	-	-	-	-	+/-15Vdc
X-6	-	-	2	-	-	+/-15Vdc
X-7	-	-	2	-	-	+/-15Vdc



ACUDC 240 SERIES DIN RAIL MOUNTING ADAPTER

AcuDC 240 Series DIN Rail adapter (DC-DIN) provides an easy installation for all panel-mounted AcuDC 240 meter models and IO options that require a DIN rail solution.





ACUPANEL 9100

EASY INSTALL PANEL METER

Cut down on costly installation with these pre-configured and pre-installed panel metering systems. The AcuPanel series also features some of Accuenergy's most powerful meters including the Acuvim II and Acuvim L series, all enclosed in either a NEMA 4 or NEMA 4X enclosure for versatile installation options.

ACCUENERGY.COM/ACUPANEL

KEY FEATURES

Factory pre-wired for fast, reliable installation.

Factory pre-configuration eliminates meter programming on-site.

Required accessory components are all pre-installed.

Self-powered panel does not require separate power supply.

Durable enclosures provide high tolerance for external force with well protection.

Available metering options include the Acuvim II series and Acuvim L series.

Housed in either a NEMA 4 rated industrial steel panel, or NEMA 4X rated polycarbonate panel for either indoor or outdoor implementation.



ACUMESH
COMPATIBLE PRODUCT



ACUCLOUD
COMPATIBLE PRODUCT



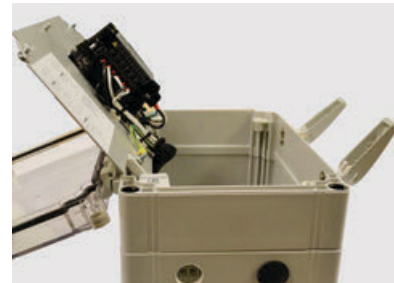
CLEAN FACTORY WIRING

Tight, reliable and tested factory installed connections and components provide for a more reliable error-free install.



COMPONENTS INCLUDED

Shorting blocks for CTs and fused terminal blocks for voltage connections pre-installed, color-coded and labelled.



PRE-CUT ENCLOSURE

Two pluggable pre-cut holes allow wires to be fed through the panel without any modification.

ACUPANEL SERIES MODELS

	AcuPanel 9104	AcuPanel 9104X
Application	Industrial Strength indoor plug n' play installation where highly secure/durable steel casing is needed.	Weather resistant plug n' play retrofit installation where weather proof enclosures are necessary
NEMA Rating	NEMA 4	NEMA 4X
Suitable for Indoor Use	•	•
Suitable for Outdoor Use		•
Pre-Configured	•	•
Pre-Wired	•	•
Dimensions	10" x 13.52" x 8.68" (254 x 324 x 220.5 mm)	7.88" x 11.81" x 7.34" (200 x 300 x 186.5 mm)



- ACULINK 810 +

DATA ACQUISITION SERVER

ADVANCED DATA ACQUISITION

The Accuenergy's AcuLink 810 is a data acquisition gateway and server designed to collect meter and sensor data for distribution to various energy management systems. Energy and sensor data are available to be stored locally or transferred to remote servers and controllers via IP-based network.

ACCUENERGY.COM/ACULINK-810

DATA COLLECTION

AcuLink polls and logs data in user-defined interval from downstream devices. All data logs are time-stamped and store in onboard memory that are available to be downloaded from a webpage or posted to remote server.

Data posting/pushing is available in HTTP, HTTPs , FTP in CSV or JSON format via Ethernet RJ45 port or WiFi network. External cellular modem can be connected to enable data post via cellular network.

- 32 Modbus RTU devices via RS485 port
- Additional 32 Modbus-RTU devices via USB port
- 100 Modbus-TCP/IP devices via network
- 8 Digital Inputs for pulse counter

EMBEDDED WEB SERVER

Access real-time datalogs from connected devices with AcuLink 810 web interface for an intermediate view of all collected devices with summary details, setup, alarms, and configurable upload channels.

- Web-server accessible via ethernet or WiFi
- SSL and TLS1.2 compliant with enhanced cybersecurity protection
- Access each devices real-time measurement reading
- Configure communication for downstream devices and upload channels
- Over/Under alarm monitoring for connected devices
- No software required – all configurations are available in webpages

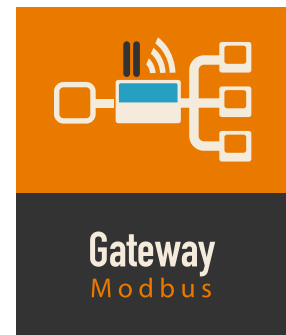




COMMUNICATION CHANNELS AND INTEGRATION

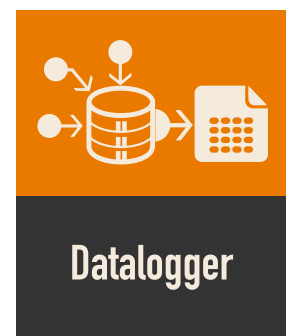
The AcuLink 810 is compatible with a wide range of existing software and control systems worldwide.

- Protocols supported: HTTP, HTTPS, FTP, sFTP, SMTP, NTP
- Log file format supported: CSV and JSON
- Easily integrate with any energy management system, billing software, efficiency analysis services
- Support Modbus gateway function that allows all RTU devices to be polled by remote Modbus master directly
- Dual RJ45 ethernet ports and WiFi connection enables simply connection to network and secure separate network connection
- USB: USB expansion port, available for serial converter to expand the communication channel



KEY FEATURES & BENEFITS

- BACnet-MSTP data acquisition
- AcuMesh support for AcuLink 810 (Wirelessly query RS485 meters)
- BACnet gateway (Converts Modbus-RTU and BACnet-MSTP to BACnet-IP)
- Remote device access
- Maintain high availability by RSTP protocol (two ports connect to same subnet)
- Ethernet Gateway for Modbus RS485 and Digital Output Devices
- Access Energy Information Remotely via Web Server, or Push to IP-based Master Devices or Software
- Data Acquisition and Logging with 8GB On-Board Memory
- Embedded Web-server for Real-Time Data and Easy Configurations
- Controller/Master System can Poll Data from all RTU Devices via Modbus-TCP/IP Protocol
- Dual Ethernet RJ45 Port and WiFi Communication Channels
- Enhanced Cybersecurity for Critical Infrastructure Deployment
- Compact DIN Rail Mount Design
- Track Energy Usage and Peak Demand
- Quick and Simple software-free setup



- ACULINK 810 +

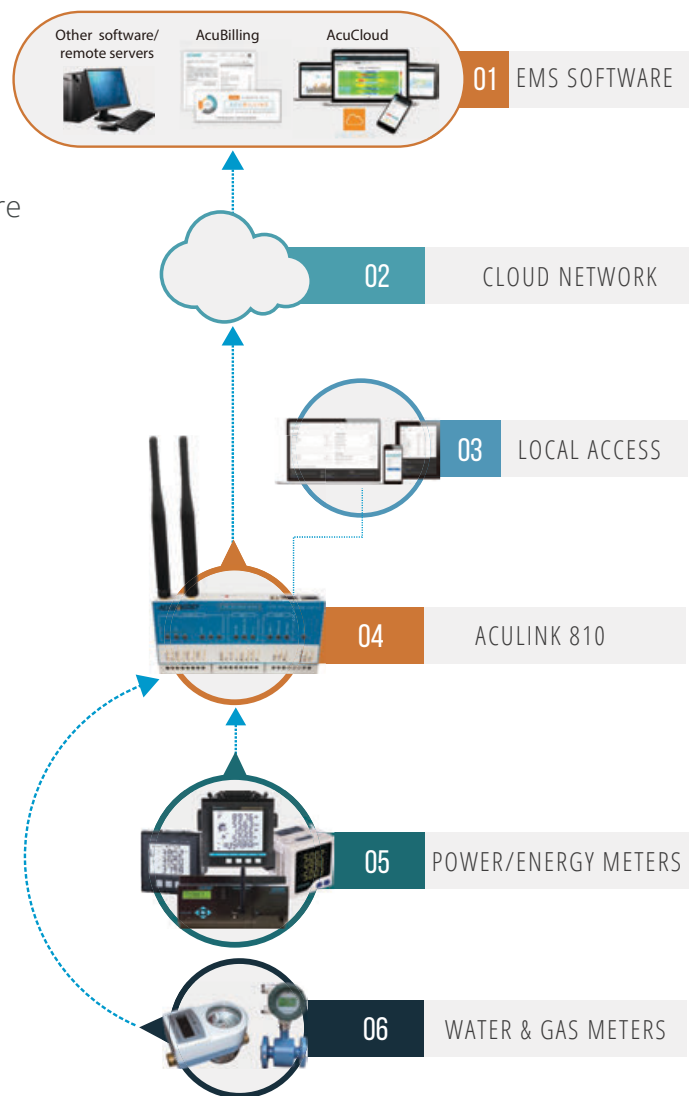
DATA ACQUISITION SERVER



APPLICATIONS

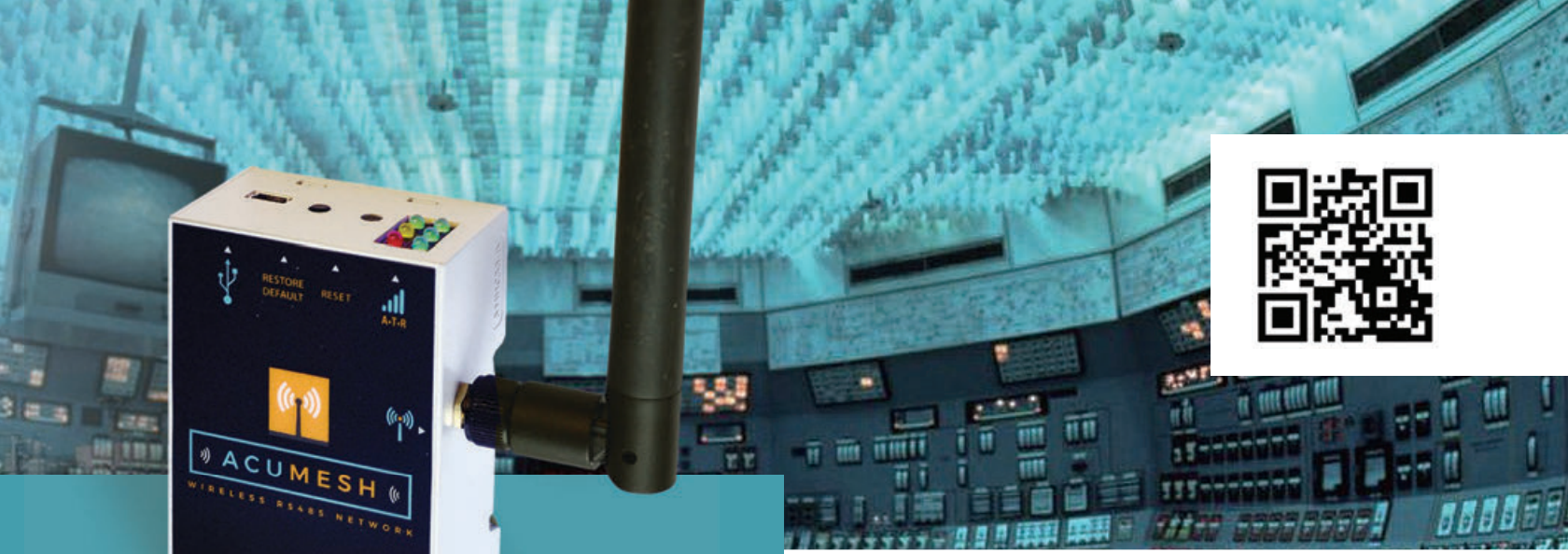
AcuLink 810 is an adaptable and integral tool in data collection enabling user to view a more complete picture of the essential power and energy used in applications such as:

- Building Automation Systems
- Energy Management Systems
- SCADA Systems
- Measurement & Verification
- Remote access energy information
- Energy Audits
- Facility Monitoring
- Campus Monitoring
- Sub Metering
- Performance contracts and Benchmarking
- Demand Response
- LEED / Energy Star Certification
- Cost Allocation



- ACULINK 810 +

DATA ACQUISITION SERVER



WIRELESS RS485 NETWORK

The AcuMesh network solution is capable of connecting RS485 enabled devices including meters, sensors, gateways, PLCs, and more, into a seamless wireless network. Offering a cost-effective non-intrusive installation requiring no additional communications wiring.

ACCUENERGY.COM/ACUMESH



WIRELESS RS485 NETWORK

KEY FEATURES

Devices are connected automatically on power up without configuration or software.

Compatible with devices running Modbus-RTU via RS485 port, e.g. Modbus-RTU, BACnet, etc.

900MHz and 868MHz frequency band available in most countries.

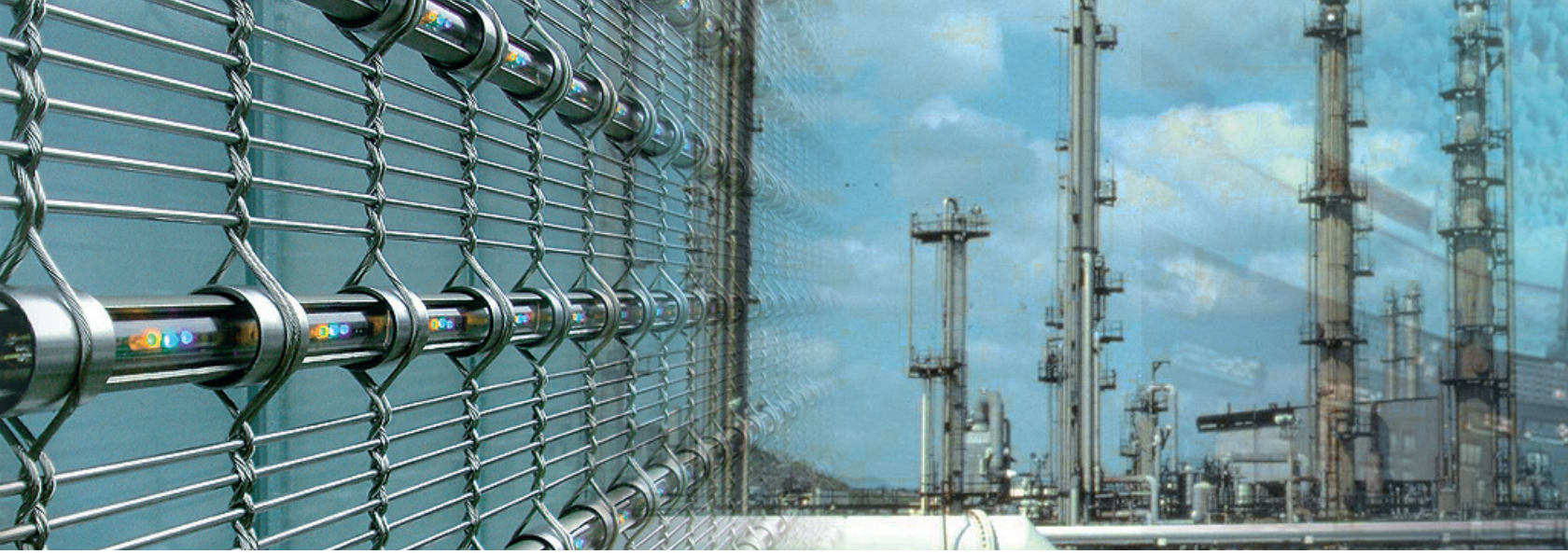
Highly secure communication with 128 bit Advanced Encryption Standard (AES).

Advance configuration available for complex network setup with free software.

Communicate wirelessly between meters, and any devices with RS485 running any protocol within a building or campus.

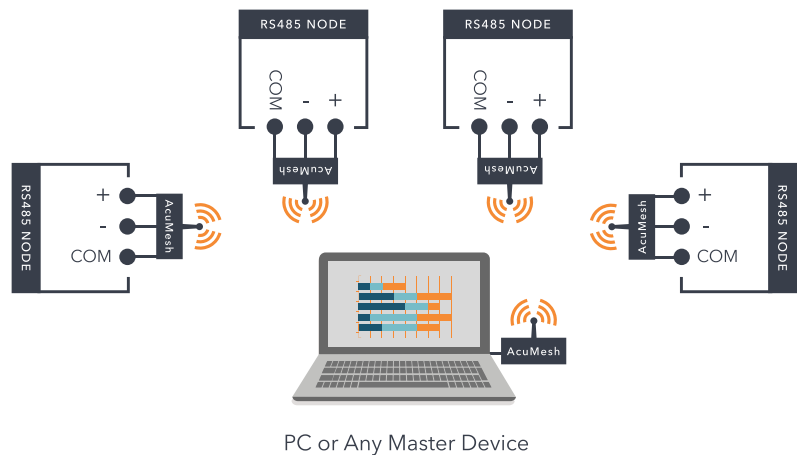
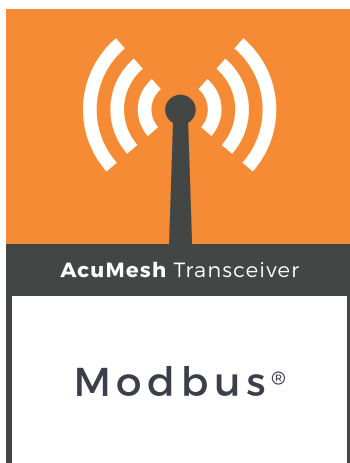
Field upgradable firmware.

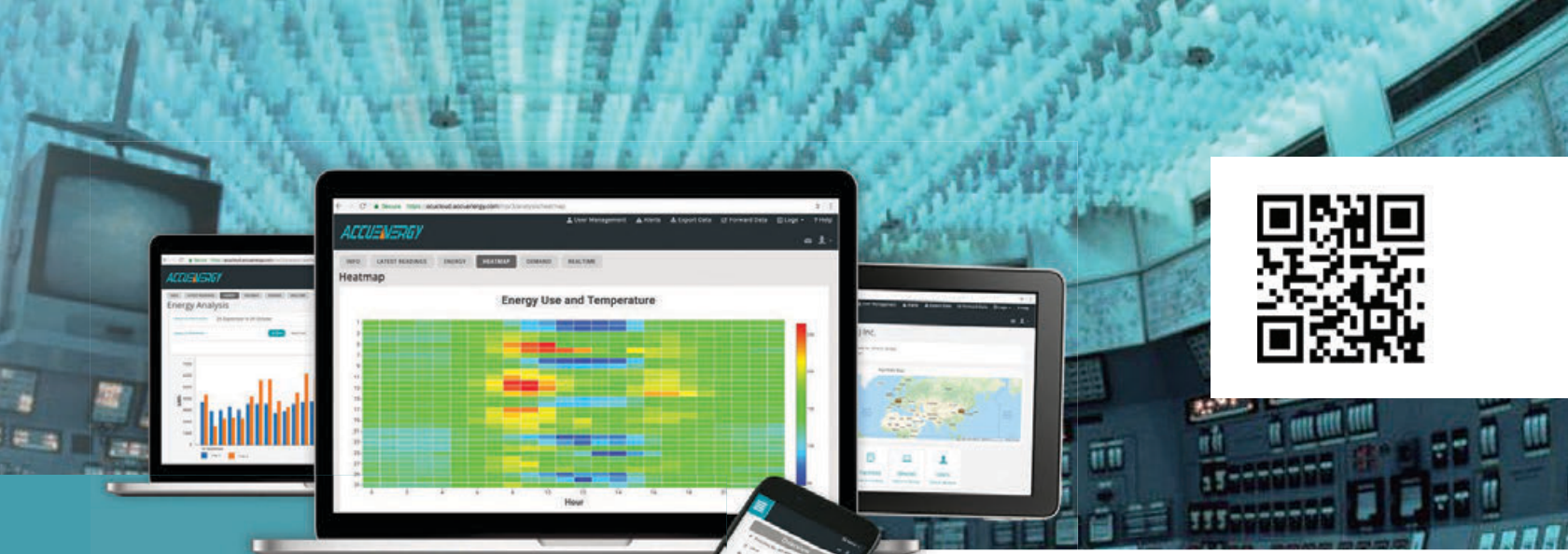
Long-range communication: 1000 ft (305m) indoor / 4 Miles (6.5km) outdoor in a single hop.



ACUMESH WIRELESS RS485 NETWORK

The AcuMesh wireless RS485 network solution eliminates the need for RS485 communication wiring. Devices can directly connect to an AcuMesh transceiver, and the job is done. The AcuMesh transceiver transparently runs with any protocol and transmits data and commands wirelessly within a network.





CLOUD-BASED ENERGY METERING PLATFORM

The AcuCloud is a cloud-based facility metering platform that provides users access to real-time and historical data from power and energy meters. The data is available to view, download, forward, analyze and report.

[ACCUENERGY.COM/ACUCLOUD](https://accuenergy.com/acucloud)



- ACUCLOUD +

CLOUD BASED METERING

KEY FEATURES

Seamless integration with all Accuenergy meters such as Acuvim II series three phase power meter and AcuRev 2000 series multi-channel energy meters. All other third-party meters can be directly connected via AcuLink 810.

Designed for energy professionals, energy savings and efficiency companies, facility managers and building supervisors that demand an intuitive and user-friendly software experience that effectively boost work performance.

It features a variety of tools designed for real-time energy monitoring, measurement & verification, energy usage trend, demand monitoring & analysis, heatmaps and energy portfolio analysis.



METERING DATA STORAGE

AcuCloud stores metering data such as per phase and system voltage, current, power, energy, power factor, demand and pulses in 5-minutes interval. Provide users unparalleled granular level into historical metering data.

DATA DOWNLOAD

Users can download and export historical metering data in CSV format for further offline analysis.

DATA FORWARD + INTEGRATION

Metering data has no value without analysis from great software. With AcuCloud, user can forward all metering data to your or other 3rd party software for analysis, reporting, billing, energy efficiency studies, measurement and verification projects.

AcuCloud support HTTP, HTTPS, FTP protocols with CSV and JSON data format.

ALERTS

We understand you want to be notified when certain data reaches its threshold or when meter is offline. AcuCloud offers email alerts to be triggered based on conditions set by the user.

REPORTS

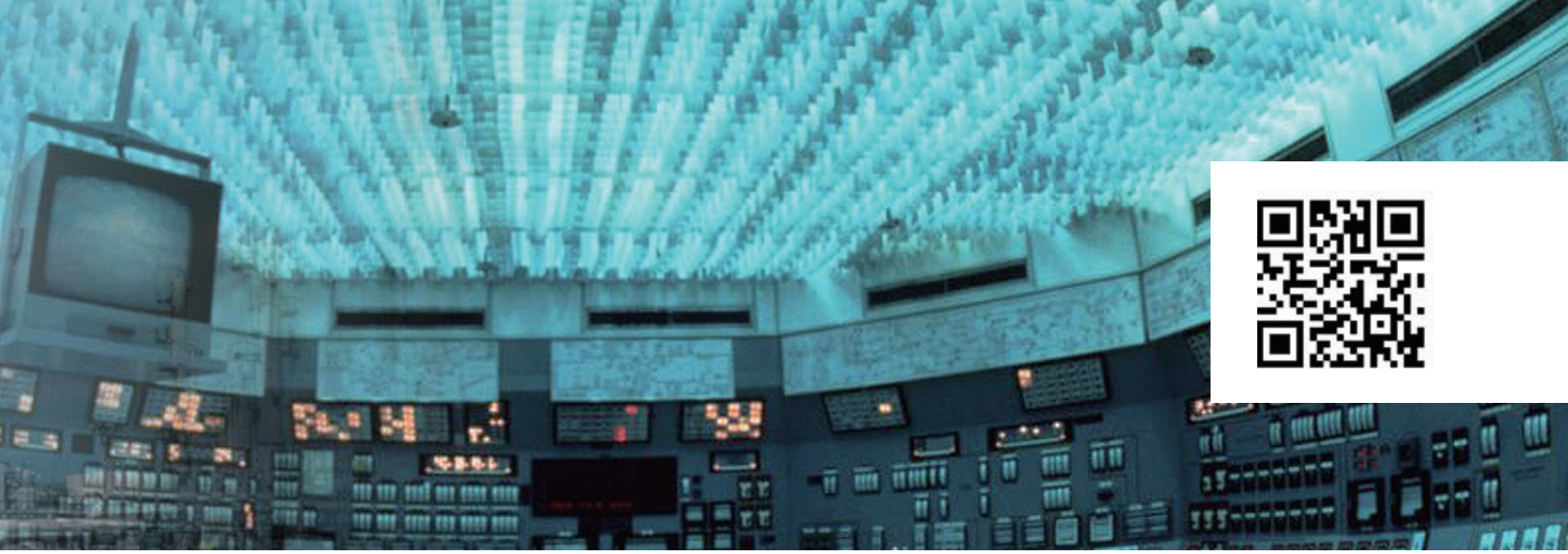
AcuCloud offers the ability to download and/or email reports direct to your colleagues for collaborative analysis and insightful decision making. You can send all or select report dashboards. These reports cover key energy management areas such as Facility Energy Consumption Trend Analysis, Top Consuming Meter Points, Deployment, Meter Point Energy Consumption Trend Analysis, Meter Point Operations Analyzer and Meter Point Active Power & Weekdays Analysis.

USER MANAGEMENT

AcuCloud offers various user access levels for your organization's data. The default access level include facility, admin, manager and view-only.

DATA ANALYTICS

AcuCloud offers quick and simple data analytics tools such as trending, energy profile analysis and comparison, energy usage trends, heatmaps, demand analysis, real-time data trend and comparison, measurement and verification and etc.



ACUCLOUD INTEGRATION EXTENSIONS:



DASHBOARD

Configurable widgets allow for monitoring measurements, metrics, and savings.



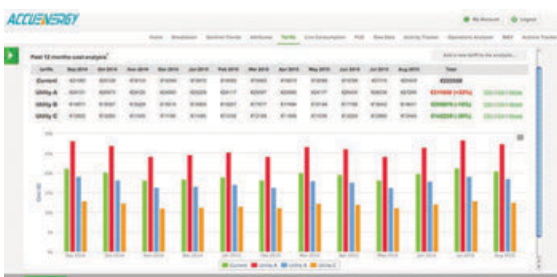
TRENDING ANALYTICS

Continually learning and profiling your power usage giving users the data they need to identify irregularities.



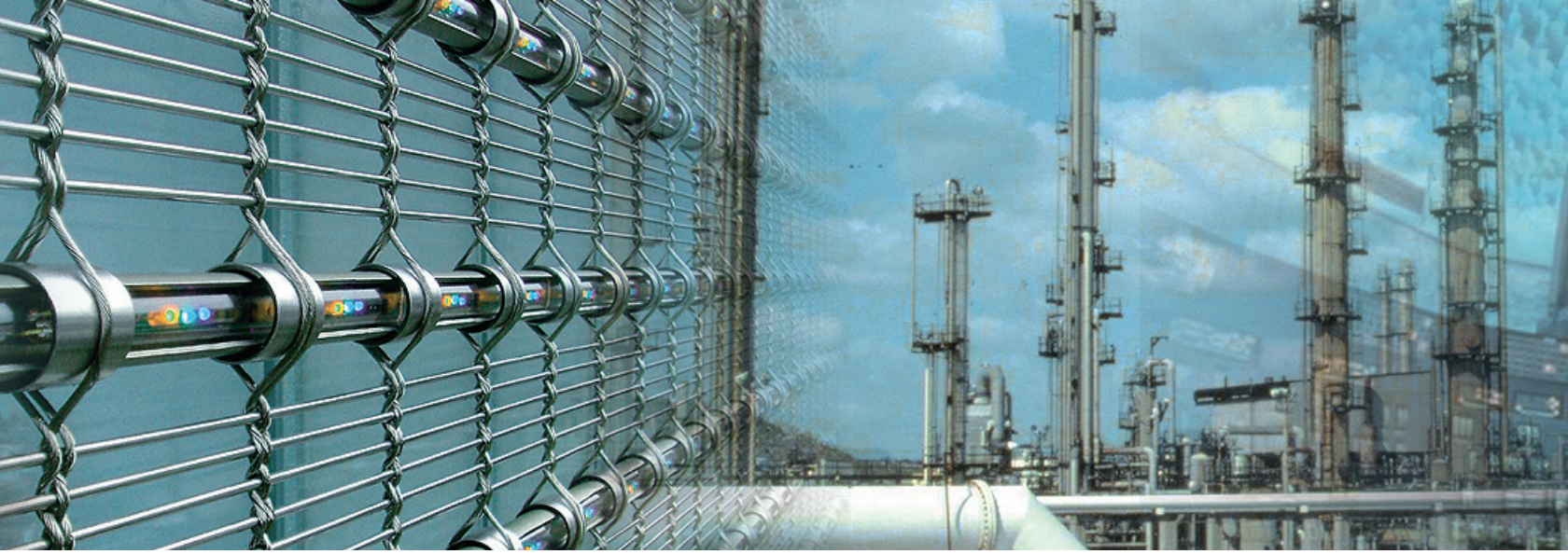
MEASUREMENT AND VERIFICATION

An advanced and effective alternative to conventional spreadsheets. Track energy conservation measures, calculate average consumption, and more.



TARIFF ANALYTICS

Offering a quick way to assess the expected savings when negotiating new energy contracts with utilities. Enter proposed tariffs and our tool calculates what you would have been paid over the past 12 months.



MONITOR TENANT KILOWATT-HOUR PROFILES


- Profiling the energy usage for each tenant group
- Provide tenants with accounts to view real-time energy consumption and historical energy consumption trends and profiles
- Increase awareness with tenant consumption profiles and compare against building average



1,248 kWh ▼
\$638 ▼

 Your Bill:




250 kWh
\$108



250 kWh
\$108

TENANT BILLING MANAGEMENT

- Manage individual tenant bill with different billing
- Process different billing structures
- Generate bill for virtual meters that are grouped from multiple submeters for internal rebilling or cost allocations
- AcuBilling creates bills based on customizable rate structure and formulas



SIMPLICITY OF INSTALLATION

Provides the ultimate ease-of-integration, this high specification line of flexible AC current transformers is best designed for power metering, power quality and general use where space is limited.

ACCUENERGY.COM/ACUCT-FLEX

- ACUCT FLEX +

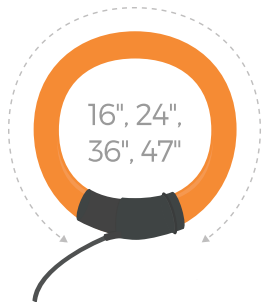
KEY FEATURES

- High accuracy for demanding applications.
- Wide frequency range means excellent choice for harmonics and power quality.
- Wide current input range 5A - 50,000A AC.
- Choice of 16", 24", 36" or 47" length.
- No additional power supply needed when used with Acuvim II Series meters.



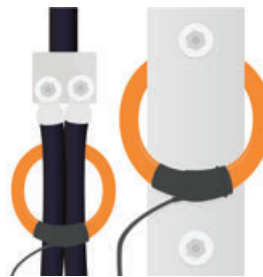
ACUCT FLEX SERIES OPTIONS

	RCT16	RCT24	RCT36	RCT47
Input Range	5A - 50000A	5A - 50000A	5A - 50000A	5A - 50000A
Output Option	Output to Specified RCT input			
Window Size	4.17" (106mm)	7.01" (178mm)	10.67" (271mm)	14.53" (369mm)
Length	15.75" (400mm)	23.62" (600mm)	35.43" (900mm)	47.24" (1200mm)
Accuracy	0.5% Combined with Acuvim II Series at Any Point			
Standard / Certifications	UL Recognized			



4 STANDARD LENGTHS

We offer four lengths of coil, 16", 24", 36" and 47".
Custom lengths available upon request.



FLEXIBLE STYLE CT

Rope-like coil that allows it to fit into any limited space where regular CTs cannot be used.



5A to
50,000A

WIDE CURRENT SENSING

Measure current from 5A to 50,000A on a each standard coil.
Higher current range available upon request.



10 Hz - **20** kHz

WIDE FREQUENCY RESPONSE RANGE

Standard frequency response range 10 Hz - 20KHz.
Higher frequency ranges available upon request.

.5%
ACCURACY

HIGH ACCURACY & LINEARITY

Across the entire range of measurement the accuracy is 0.5%.

mV/kA
OUTPUT

STANDARD & CUSTOM OUTPUT

Multiple options of output ratio such as: 100mV/1000A, 40mV/1000A, 25mV/1000A, 10mV/1000A.



- RIK SERIES +

KEY FEATURES

Seven field-configurable CT ratios: 500A, 1kA, 2.5kA, 5kA, 10kA, 25kA, 50kA.

Output types include 0-5A, 0-1A, 0-333mV, 4-20mA, 0-20mA, 0-5V, 0-10V.

0-1A Output Relay Class (5P20).

Individual CT ratios can be configured for each channel. Works in any single phase application with different current ratings.

Works in both 50Hz and 60Hz systems.

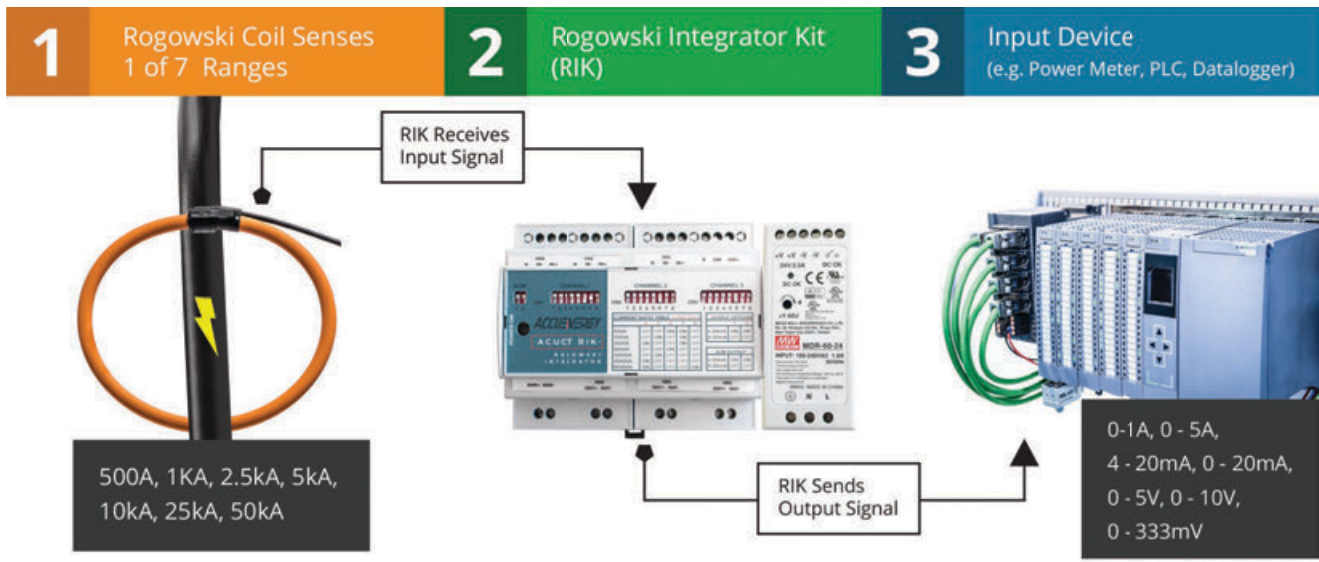
Choice of 16", 24", 36" or 47" length.

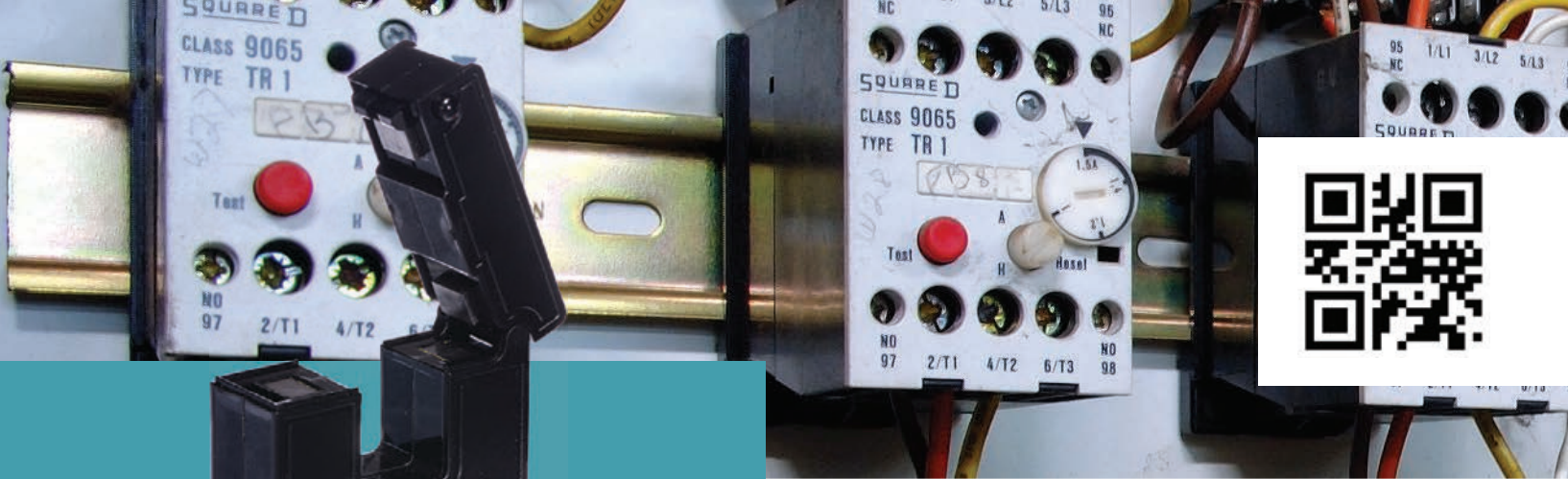


FLEXIBILITY FOR ANY SYSTEM

This plug-n-play solution can be integrated with almost any power meter and equipment. Individual CT ratios can be configured for each channel. Compatible with any single or three phase application with different current ratings.

ACCUEnergy.COM/ACUCT-RIK





HIGH ACCURACY SPLIT CORE CTS

High-accuracy split core current transformers with a unique press-to-open hinged design and current input range from 5A to 5000A AC. AcuCT R also offers revenue grade accuracy for billing applications.

ACCUENERGY.COM/ACUCT-R

- ACUCT R +

KEY FEATURES

5A - 5000A AC current input range.

Revenue grade accuracy meets IEC 60044-1 Class 0.5s.

UL listed for XOBA UL2808 standard, CSA C22.2 No. 61010-1.

Multiple voltage or current secondary output options including 5A and 333mV.

Multiple mounting options with included accessories, and multiple window shapes and sizes available.

ACUCT R SERIES OPTIONS



	AcuCT-075R	AcuCT-100R	AcuCT-125R	AcuCT-200R	AcuCT-3135R	AcuCT-4161R	AcuCT-5170R
Input Range	1A - 150A	5A - 250A	5A - 400A	5A - 1000A	5A - 1500A	5A - 5000A	5A - 5000A
Typical Input	50A, 100A, 150A	100A, 200A, 250A	100A, 200A, 300A, 400A	400A, 600A, 800A, 1000A	600A, 800A, 1000A, 1200A, 1500A	1200A, 1600A, 2000A, 2500A, 3000A, 4000A, 5000A	2000A, 3000A, 4000A, 5000A
Output Option	333mV, 80mA, 100mA, 200mA	1A, 333mV, 80mA, 100mA, 200mA	1A, 333mV, 80mA, 100mA, 200mA	1A, 333mV, 80mA, 100mA, 200mA	5A, 1A, 333mV, 80mA, 100mA, 200mA	5A, 1A, 333mV, 80mA, 100mA, 200mA	5A, 1A, 333mV, 80mA, 100mA, 200mA
Window Size	0.75" x 0.75" (19.5 x 19.5 mm)	1" x 1" (25 x 25 mm)	1.25" x 1.25" (32 x 32 mm)	2" x 2" (51 x 51 mm)	3.1" x 3.5" (80 x 90 mm)	4.1" x 6.1" (105 x 155 mm)	5.1" x 7" (130 x 180 mm)
Exterior Dimensions	2.3" x 2.3" x 0.9" (58 x 58 x 22 mm)	2.6" x 2.6" x 0.9" (65 x 65 x 22 mm)	3.2" x 3.2" x 0.9" (82 x 82 x 22 mm)	4.4" x 4.4" x 1.25" (111 x 111 x 32 mm)	5.7" x 6.1" x 1.25" (144 x 154 x 32 mm)	7.3" x 9.3" x 1.8" (185 x 235 x 45 mm)	8.3" x 10.2" x 1.8" (210 x 260 x 45 mm)
Accuracy	IEC 60044-1 0.5s class						



- ACUCT mV +

KEY FEATURES

Current transformers offering a conventional split core form factor.

Safe mV secondary output.

0.5% accuracy from 10-120% of rated current.

20A - 5000A AC current input range.

UL recognized.



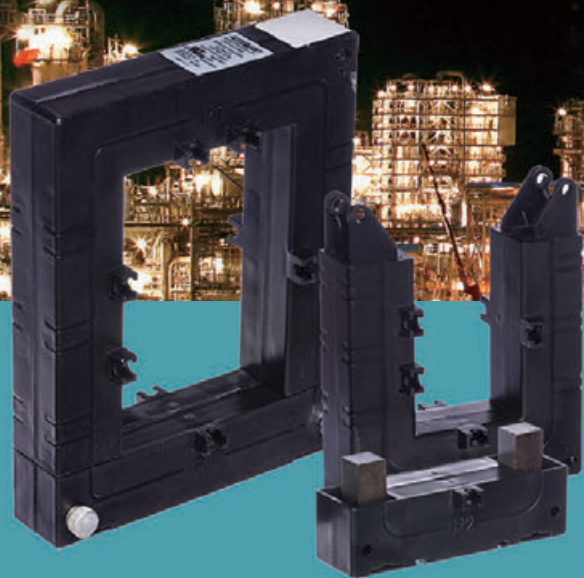
COMPACT SPLIT CORE MV CTs

AcuCT mV series is comprised of compact and light-weight 333mV current transformers with a split core form factor. These CTs are a cost effective solution for general panel metering applications.

ACCUENERGY.COM/ACUCT-MV

ACUCT MV SERIES OPTIONS

	AcuCT-075	AcuCT-125	AcuCT-200	AcuCT-3050
Input Range	10A - 200A	30A - 600A	60A - 1500A	40A - 5000A
Typical Input	100A, 200A	300A, 400A, 600A	600A, 800A, 1000A, 1200A, 1500A	400A, 600A, 1000A, 1500A, 2000A, 3000A, 5000A
Rated Option	333mV			
Window Size	0.75" x 0.75" (19.1 x 19.1 mm)	1.25" x 1.25" (31.8 x 31.8 mm)	2" x 2" (50.8 x 50.8 mm)	3" x 5" (76.2 x 127 mm)
Exterior Dimensions	2" x 2.098" x 0.669" (50.8 x 53.3 x 17 mm)	3.248" x 3.35" x 1.025" (82.5 x 85.1 x 26 mm)	4.764" x 5" x 1.81" (121 x 127 x 30 mm)	5.748" x 7.5" x 1.402" (146 x 190.5 x 35.6 mm)
Accuracy	0.5%	0.5%	0.5%	0.5%
Standard / Certifications	UR, CE, RoHS			



INDUSTRIAL STANDARD 5A

Light-weight, compact split core 5A current transformers. High accuracy CTs available in a range of sizes with input ranges from 5A to 5000A AC, the AcuCT 5A offers specialized mounting clips and tension screws for ideal installation.

ACCUENERGY.COM/ACUCT-5A

- ACUCT 5A +

KEY FEATURES

0.5% accuracy from 10%-120% of rated current.

100A to 6000A measurement range.

Industrial standard 5A secondary output.

Optional 1A output.

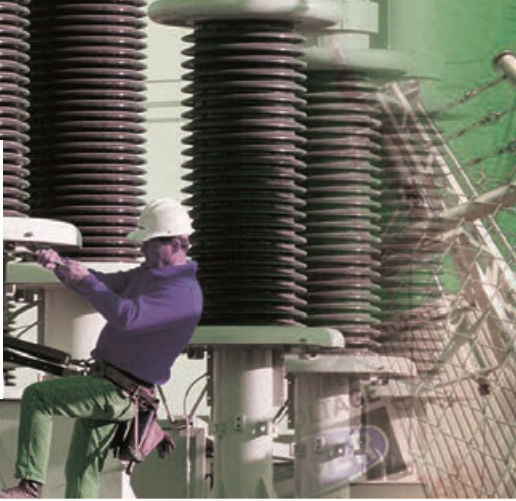
Accessory kits included for mounting in multiple locations.

UL recognized.



ACUCT 5A SERIES OPTIONS

	AcuCT-0812	AcuCT-2031	AcuCT-3147	AcuCT-3163
Input Range	5A - 400A	5A - 1000A	5A - 1600A	5A - 5000A
Typical Input	200A, 250A, 300A, 400A	400A, 600A, 800A, 1000A	1000A, 1200A, 1600A	2000A, 2500A, 3000A, 4000A, 5000A
Output Option	5A, 1A	5A, 1A	5A, 1A	5A, 1A
Window Size	0.83" x 1.22" (21 x 31 mm)	1.97" x 3.15" (50 x 80 mm)	3.15" x 4.72" (80 x 120 mm)	3.15" x 6.3" (80 x 160 mm)
Exterior Dimensions	3.5" x 4.13" x 1.57" (89 x 105 x 40 mm)	4.49" x 5.71" x 1.97" (114 x 145 x 50 mm)	5.67" x 7.28" x 1.97" (144 x 185 x 50 mm)	6.93" x 9.72" x 2.76" (176 x 247 x 70 mm)
Accuracy	0.5%	0.5%	0.5%	0.5%
Standard / Certifications	UR, CE, RoHS			



- ACUCT HINGED +

KEY FEATURES

Quick & simple install with hinged clip.

Safe mV secondary output.

5A - 630A AC current input range.

0.5% accuracy from 10-120% of rated current.

UL recognized.



COMPACT HINGED CTS

Compact, light-weight split core current transformers designed for installation on branch circuits within an electrical panel. The AcuCT Hinged series is simple to install allowing for quick deployment in demanding applications.

ACCUENERGY.COM/ACUCT-HINGED

ACUCT HINGED SERIES OPTIONS

	AcuCT-H040	AcuCT-H063	AcuCT-H100	AcuCT-H138
Input Range	5A - 75A	5A - 150A	5A - 250A	10A - 630A
Typical Input	20A, 30A, 40A, 50A, 60A	50A, 100A, 150A	100A, 120A, 200A, 250A	200A, 400A, 600A
Rated Output	333mV			
Window Diameter	0.4" (10.2 mm)	0.63" (16 mm)	1" (25.4 mm)	1.38" (35 mm)
Exterior Dimensions	1.16" x 1.64" x 1.04" (29.4 x 41.7 x 26.4 mm)	1.42" x 2.09" x 1.2" (36 x 53 x 30.5 mm)	2" x 2.76" x 1.52" (50.8 x 70.1 x 38.6 mm)	2.56" x 3.27" x 1.57" (65 x 83 x 40 mm)
Accuracy	0.5%			
Standard / Certifications	UR, CE, RoHS			



- ACUCT S113 +

SOLID CORE CURRENT TRANSFORMERS

KEY FEATURES

- <1000V Rated Voltage
- 0-200A(r.m.s) Current Input
- 0-5A(r.m.s) Current Output
- ≤3.75VA Burden
- 1.2In RF
- 50Hz-60Hz Rated Frequency
- ≤±1.0% Ratio Error
- ≤60´ Phase Error
- 5-120% Measurement Range
- 500V/100MΩ min Insulation resistance
- <90% Humidity
- Terminal Output Form Factor
- Lightweight, 177g Weight
- 25°C+70°C Operating Temperature
- 40°C+85°C Storage Temperature

[ACCUENERGY.COM/ACUCT-S113](http://accuenergy.com/acuct-s113)

HIGH ACCURACY SOLID CORE CTS

The Accuenergy solid core CTs are compact and low-cost current transformers with high accuracy. This series of CTs is designed specifically for integration into products which require exceptionally accurate signal transformation.



- ACUCT S77 +

SOLID CORE CURRENT TRANSFORMERS

KEY FEATURES

- 0.15 class Accuracy
- 10 kV Impulse Insulation (BIL)
- 50 MΩ Insulation Resistance
- UL94V-0 Enclosure Plastic
- 18 AWG UL 1015 Lead Wire
- 25°C/80% C/80%~90% Temperature & Humidity
- cULus Approved
- Measurement Canada Approved

[ACCUENERGY.COM/ACUCT-S77](http://accuenergy.com/acuct-s77)

NEED HELP?



CONTACT US FOR

ENGINEERING

DESIGN & SPECIFICATION SUPPORT



ACCUENERGY (CANADA) INC.

2 Lansing Square, Suite 700
Toronto, ON M2J 4P8, Canada

TF: **1-877-721-8908**
INT: **+1-416-497-4100**
FAX: **+1-416-497-4130**
E: marketing@accuenergy.com



ACCUENERGY SOUTH AFRICA (PTY) LTD.

Castle Walk Corporate Park, Block B, Cnr.
Nossob & Swakop Street, Erasmuskloof,
Pretoria, 0181, South Africa

TF: **+27 (0) 87 802 6136**

ACCUEVERGY

WWW.ACCUEENERGY.COM

Make Energy Usage Smarter